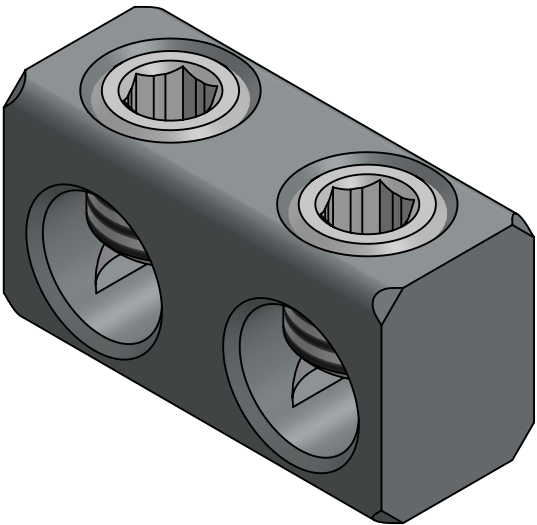
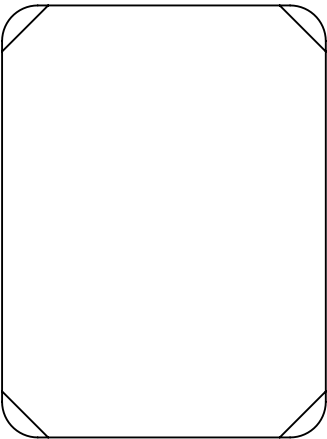
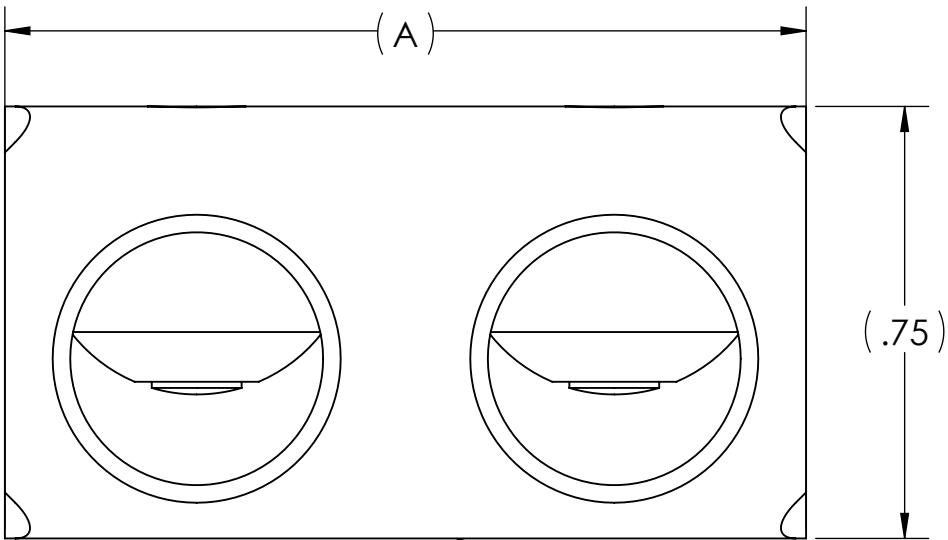
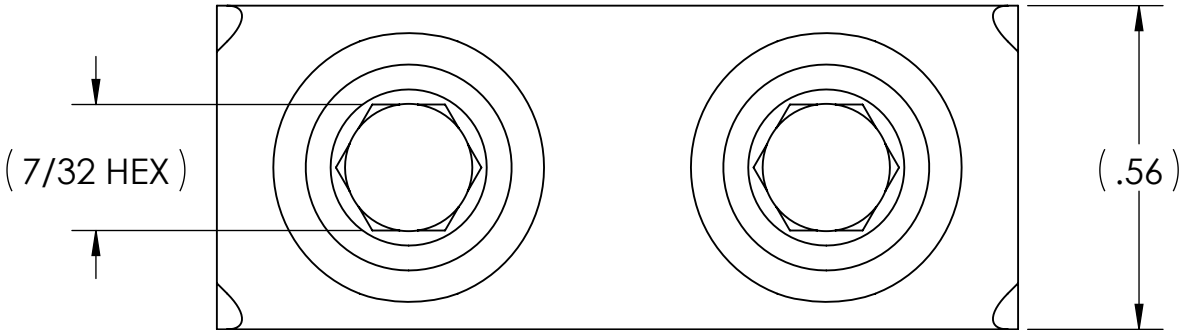




REV.	CATALOG NUMBER	SCREW QUANTITY	NUMBER OF WIRE PORTS	A	INSTALLATION TORQUE (IN•LB)	APPROX. WEIGHT (LB)
-	UPB-NA2/0-2	2	2	1.39	180	0.044
-	UPB-NA2/0-3	3	3	2.12		0.068
-	UPB-NA2/0-4	4	4	2.84		0.091
-	UPB-NA2/0-5	5	5	3.57		0.114
-	UPB-NA2/0-6	6	6	4.29		0.138
-	UPB-NA2/0-8	8	8	5.74		0.184
-	UPB-NA2/0-10	10	10	7.19		0.231
-	UPB-NA2/0-12	12	12	8.64		0.278
-	UPB-NA2/0-14	14	14	10.09		0.324



- INK STAMP TO READ:
- PENN-UNION
 - "CATALOG NUMBER"
 - 2/0 STR. - 14 SOL
 - AL9CU
 - 

- NOTES:
- ALL DIMENSIONS IN INCHES UNLESS OTHERWISE SPECIFIED
 - FIGURE IS REPRESENTATIVE EXACT COMPONENT FEATURES MAY VARY
 - TIN PLATED TO INHIBIT CORROSION
 - CONNECTORS ARE cULus LISTED PER UL486A-B FOR POWER APPLICATIONS UP TO 90°C

			X	ALUMINUM SET SCREW		
			1	ALUMINUM POWER BAR BODY		
QTY.			PT.	NAME OR DESCRIPTION		
			SEE TABLE	CAT. NO.	UNINSULATED POWER BARS FOR 2/0 STR. - 14 SOL.	
REF. DWG'S: 4307-56517					H:\4307\UPB-NA2.0	
 PennUnion TM 229 WATERFORD STREET EDINBORO, PA 16412 USA					DRAWN BY: DT DATE: 8/20/2024 CHK'D: <i>PJO</i>	
					SCALE: 3:1 INTERPRET PER ASME Y14.5-2009 FILE: 4307	
					SIZE: B	
			DWG. NO.	UPB-NA2/0	REV. -	