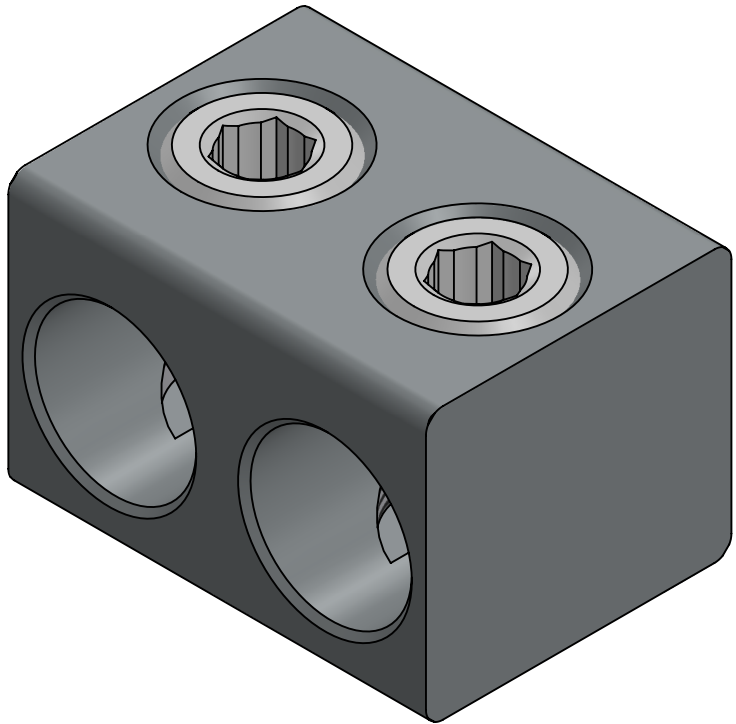



- INK STAMP TO READ:
- PENN-UNION
  - "CATALOG NUMBER"
  - 1000 MCM - 1/0 AWG
  - AL9CU
  -

NOTES:

- ALL DIMENSIONS IN INCHES UNLESS OTHERWISE SPECIFIED
- FIGURE IS REPRESENTATIVE EXACT COMPONENT FEATURES MAY VARY
- TIN PLATED TO INHIBIT CORROSION
- CONNECTORS ARE cULus LISTED PER UL486A-B FOR POWER APPLICATIONS UP TO 90°C

REV.	CATALOG NUMBER	SCREW QUANTITY	NUMBER OF WIRE PORTS	A	INSTALLATION TORQUE (IN•LB)		APPROX. WEIGHT (LB)
					UL486A-B	ANSI C119.6	
-	UPB-NA1000-2	2	2	3.08	600	800	0.937
-	UPB-NA1000-3	3	3	4.66			1.428
-	UPB-NA1000-4	4	4	6.25			1.918
-	UPB-NA1000-5	5	5	7.84			2.409
-	UPB-NA1000-6	6	6	9.43			2.900
-	UPB-NA1000-8	8	8	12.60			3.881
-	UPB-NA1000-10	10	10	15.78			4.862
-	UPB-NA1000-12	12	12	18.96			5.843
-	UPB-NA1000-14	14	14	22.13			6.824



			X	ALUMINUM SET SCREW				
			1	ALUMINUM POWER BAR BODY				
QTY.		PT.	NAME OR DESCRIPTION					
				UNINSULATED POWER BARS FOR 1000 MCM - 1/0 STR.				
			REF. DWG'S: 4307-56522		H:\4307\UPB-NA1000			
SEE TABLE	CAT. NO.	<div> <b>PennUnion™</b> 229 WATERFORD STREET EDINBORO, PA 16412 USA</div>		DRAWN BY: DT		DATE: 8/29/2024	CHK'D: <i>PJD</i>	
				SCALE: 1:1		INTERPRET PER ASME Y14.5-2009		FILE: 4307
				SIZE: B		DWG. NO. <b>UPB-NA1000</b>		REV. <b>-</b>
				