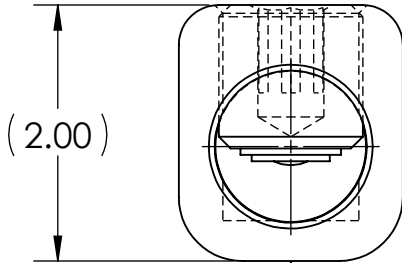
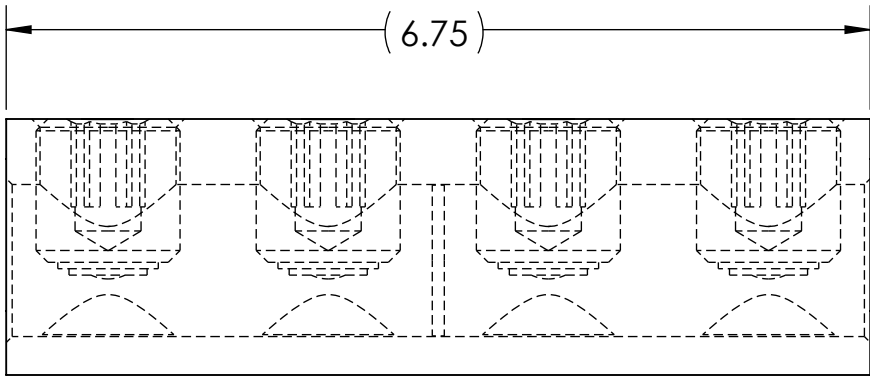
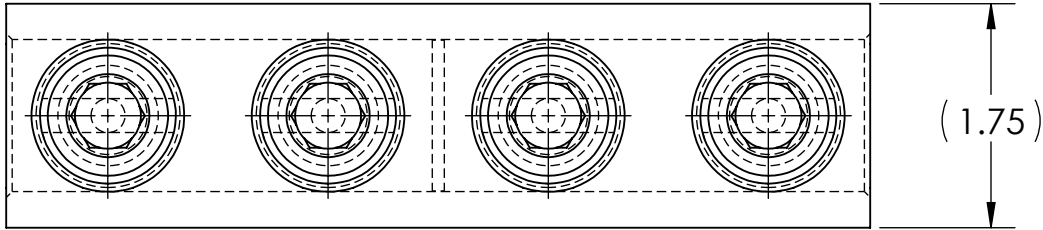

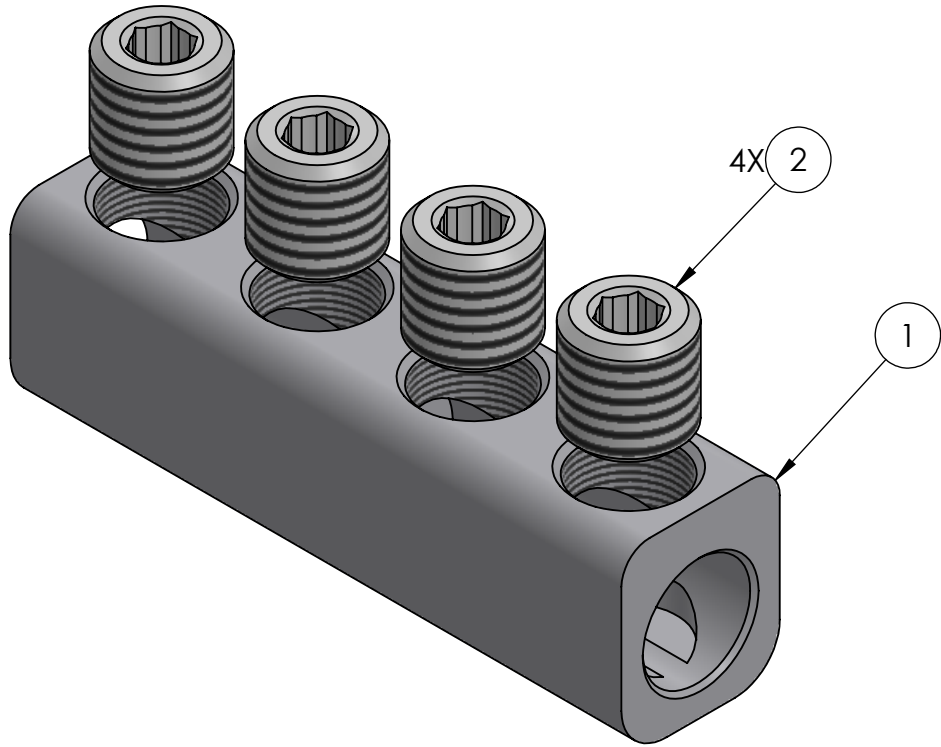



CONDUCTOR SIZE AND STRANDING					
CLASS B & C	CLASS G	CLASS H	CLASS I	CLASS K	DIESEL LOCOMOTIVE CABLE (DLO)
1000 MCM - 500 MCM	600 MCM (427/.0375) - 500 MCM (259/.0439)	600 MCM (703/.0292) - 500 MCM (427/.0342)	600 MCM (1470/.0201) - 500 MCM (1225/.0201)	600 MCM (5985/.0100) - 500 MCM (5054/.0100)	646 MCM (1600/.0201) - 535 MCM (1325/.0201)

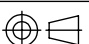


INK STAMPING:  
PENN-UNION  
SR-1000  
1000-500 MCM  
 AL9CU



- NOTES:
- ALL DIMENSIONS IN INCHES UNLESS OTHERWISE SPECIFIED
  - HEX SIZE: 1/2
  - INSTALLATION TORQUE: 800 IN•LB, SET SCREWS TO BE TORQUED FROM OUTER ENDS OF CONNECTOR TOWARDS CENTER
  - STRIP LENGTH: 3-5/8
  -  LISTED TO 486A-486B FOR ALUMINUM AND COPPER
  - CONDUCTORS AT 35 KV, 90°C  
APPROX. WEIGHT: 1.638 LB

NO.	ECN	DATE
REVISIONS		

			4	2	ALUMINUM SET SCREW			
			1	1	TIN PLATED ALUMINUM BODY			
QTY.			PT.		NAME OR DESCRIPTION			
					ALUMINUM SPLICER/REDUCER for 1000-500 MCM			
					REF. DWG'S: 5T46-56577			
					H:\5T46\56577_C			
					DRAWN BY: QJB      DATE: 9/4/2025      CHK'D: MES			
					SCALE: 2:3		INTERPRET PER ASME Y14.5-2009	FILE: 5T46
					SIZE: B		DWG. NO.	
							SR-1000	
							REV.	
							-	