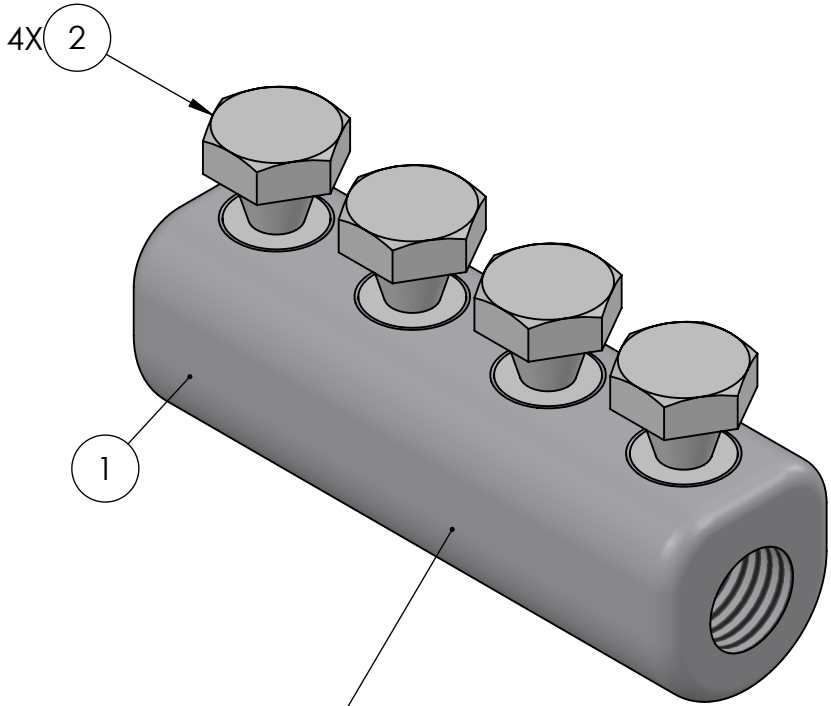
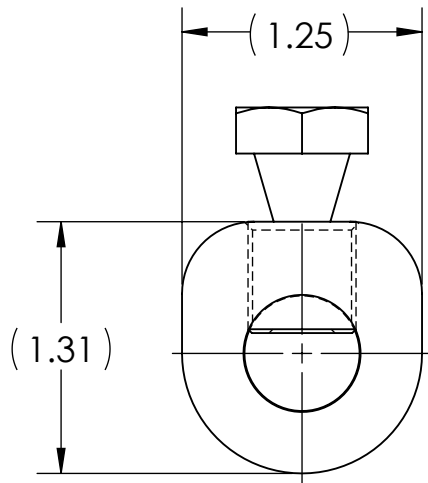
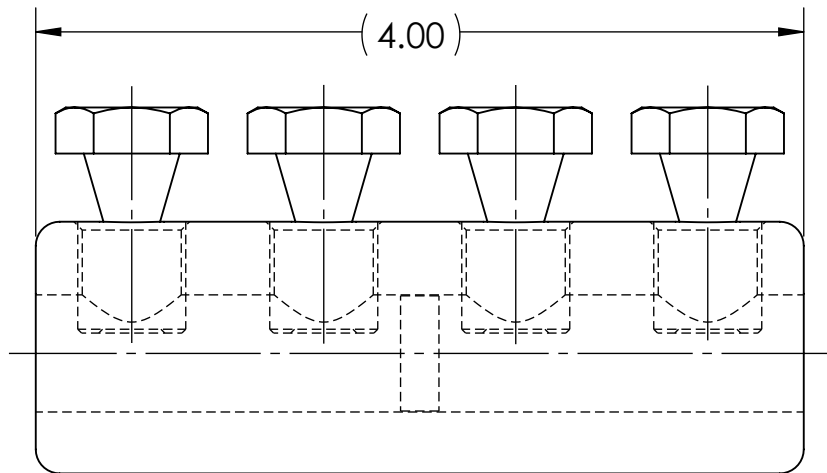





CONDUCTOR STRIP LENGTH	ESTIMATED BREAK OFF TORQUE
2.00	17 FT•LB



- STAMPING TO READ:
1. PENN-UNION
 2. SBC-4/0-A
 3. AL9CU
 4. 2-4/0 AWG
 - 5.

- NOTES:
1. ALL DIMENSIONS IN INCHES UNLESS OTHERWISE SPECIFIED
 2. BODY AND SCREWS MADE FROM HIGH STRENGTH ALUMINUM
 3. TIN PLATED TO INHIBIT CORROSION
 4. RATED FOR COPPER AND ALUMINUM CLASS B & C CONDUCTORS
 5. SOLID CENTER BARRIER TO ENSURE PROPER INSERTION OF CONDUCTORS TO FULL DEPTH AND TO PROVIDE A TIGHT SEAL
 6. WIRE BARRELS ARE PREFILLED WITH OXIDE INHIBITING COMPOUND AND CAPPED
 7. SUITABLE FOR VOLTAGES UP TO 35 KV IF TAPED ACCORDING TO ACCEPTABLE PRACTICES, 5 KV IS THE MAXIMUM VOLTAGE LEVEL IN ALL BARE SPLICE APPLICATIONS
 8. LISTED PER UL 486A-B FOR POWER APPLICATIONS UP TO 90°C
 9. COMPLIANT TO ANSI C119.4, CLASS A CURRENT, CLASS 3 (MINIMUM) TENSION
 10. CONNECTORS ARE PACKAGED INDIVIDUALLY WITH INSTRUCTION SHEET IN SEALED POLY BAG
 11. APPROX. WEIGHT (CAPS, BAGS, INHIBITOR EXCLUDED): 0.516 LB.

2	12254	8/8/2023
1	12080	5/13/2021
NO.	ECN	DATE
REVISIONS		

			2	4	PLASTIC CAPS (NOT SHOWN)
			X	3	CUAL-AID #11C (NOT SHOWN)
			4	2	SHEAR BOLT
			1	1	SPLICE BODY
QTY.			PT.	NAME OR DESCRIPTION	
				ALUMINUM SHEAR BOLT SPLICE for 2 STR - 4/0 STR	
				REF. DWG'S: 4J29-56196	
				H:\4J29\56196_C	
SBC-4/0-A	CAT. NO.			DRAWN BY: QJB	
				DATE: 3/14/2023	
		229 WATERFORD STREET		CHK'D: NAK	
		EDINBORO, PA 16412 USA		SCALE: 1:1	
				INTERPRET PER ASME Y14.5-2009	
				SIZE: B	FILE: 4J29
					
				DWG. NO.	
				SBC-4/0-A	
					REV.
					2