
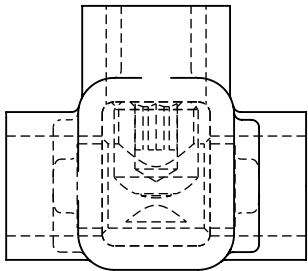
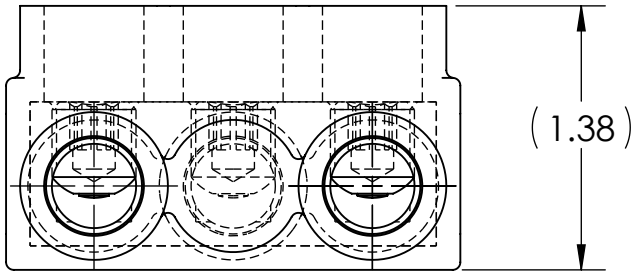
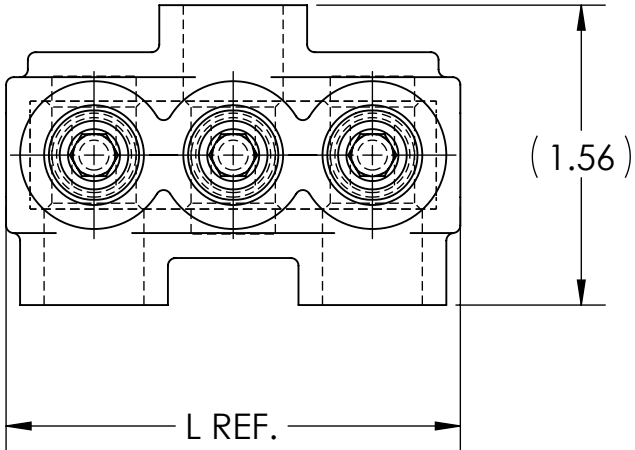


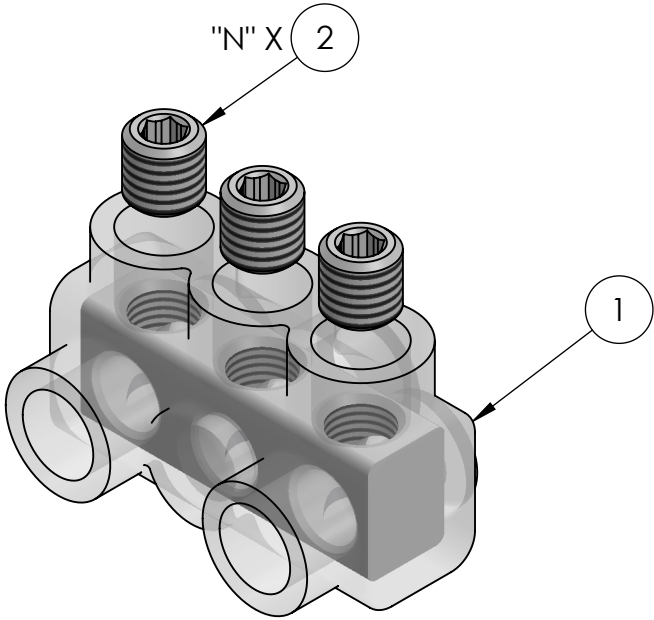
- NOTES:
- ALL DIMENSIONS IN INCHES UNLESS OTHERWISE SPECIFIED
 - CONDUCTOR RANGE: 2/0 STR - 14 SOL
 - SUITABLE FOR USE IN PANEL BOARDS, CABLE TRAYS, RACEWAYS, DUCTS, AND TROUGHS
 - INSULATION TEMPERATURE RATING: 135°C TO -40°C
 - PRE-FILLED WITH OXIDE INHIBITOR
 - SUPPLIED WITH REMOVABLE ACCESS PLUGS
 - PRE-INSULATED WITH CLEAR HIGH DIELECTRIC STRENGTH PLASTISOL
 - HEX SIZE: 7/32"
 - INSTALLATION TORQUE: 180 IN•LB
10.  LISTED TO 486A-486B FOR ALUMINUM AND COPPER
11. CONDUCTORS AT 90°C
- CONNECTORS ARE RATED AND LISTED FOR PARALLEL USE. PLEASE SEE PARALLEL RATING SHEET FOR SPECIFIC INFORMATION



INK STAMPING:
PENN-UNION
CAT. NO.
2/0 STR - 14 SOL
 AL9CU

CAT. NO.	L REF.	N	NUMBER OF CONDUCTORS	APPROX. WEIGHT (LB)
IPB-NA2/0-2A	1.64	2	2	0.089
IPB-NA2/0-3A	2.37	3	3	0.131
IPB-NA2/0-4A	3.09	4	4	0.173
IPB-NA2/0-5A	3.82	5	5	0.215
IPB-NA2/0-6A	4.54	6	6	0.256
IPB-NA2/0-8A	5.99	8	8	0.340
IPB-NA2/0-10A	7.44	10	10	0.424
IPB-NA2/0-12A	8.89	12	12	0.508
IPB-NA2/0-14A	10.34	14	14	0.592

- NOTES:
- APPROX. WEIGHT EXCLUDES ITEMS 3 AND 4
 - CONDUCTOR PORTS ARE "N" QUANTITY, VIEWS BELOW ARE FOR REFERENCE ONLY



CONDUCTOR SIZE AND STRANDING					
CLASS B & C	CLASS G	CLASS H	CLASS I	CLASS K	DIESEL LOCOMOTIVE CABLE (DLO)
2/0 STR. - 14 SOL.	#1 (133/.0251) - #14 (49/.0092)	#1 (259/.0180) - #9 (133/.0099)	#1 (210/.0201) - #6 (63/.0201)	#1 (836/.0100) - #9 (133/.0100)	#1 (225/.0201) - #14 (19/.0142)

2	11881	12/27/2019
1	11530	2/9/2015
NO.	ECN	DATE
REVISIONS		

			2N	4	PLASTIC PLUG (NOT SHOWN)
			X	3	CUAL GEL OXIDE INHIBITOR (NOT SHOWN)
			N	2	ALUMINUM SET SCREW
			1	1	INSULATED ALUMINUM BODY
QTY.			PT.	NAME OR DESCRIPTION	
SEE TABLE			CAT. NO.	CLEAR INSULATED POWER BAR	
				for	
				2/0 STR - 14 SOL	
				REF. DWG'S: 4304-98196S3	
				H:\4304\98196S3_C	
				DRAWN BY: QJB	
				DATE: 6/9/2021	
				CHK'D: CLT	
				SCALE: 1:1	
				INTERPRET PER ASME Y14.5-2009	
				FILE: 4304	
				SIZE: B	
				DWG. NO.	
				IPB-NA2/0-A	
				REV.	
				2	