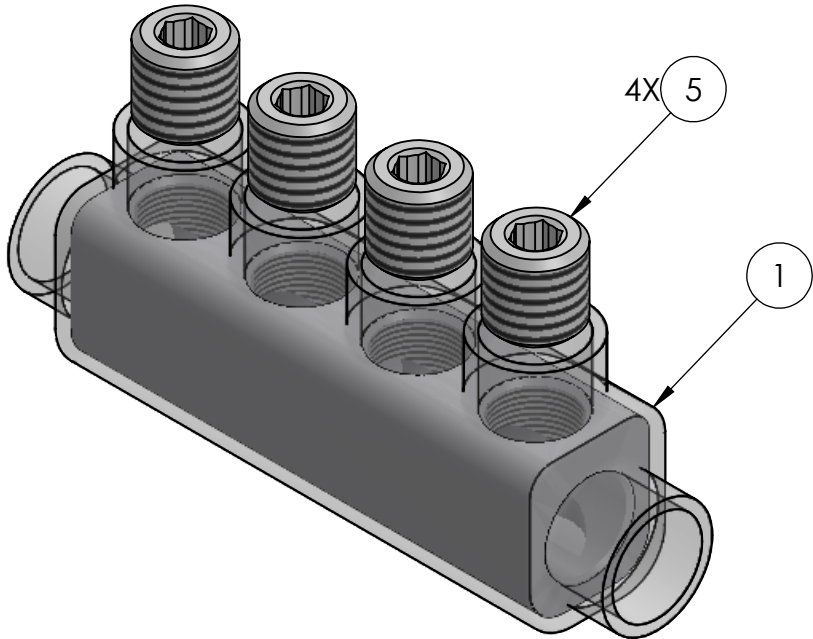
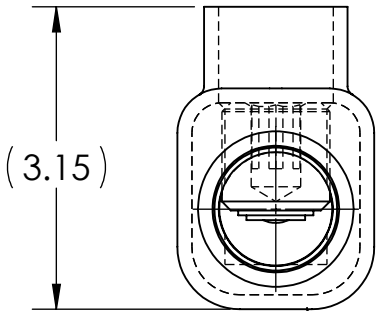
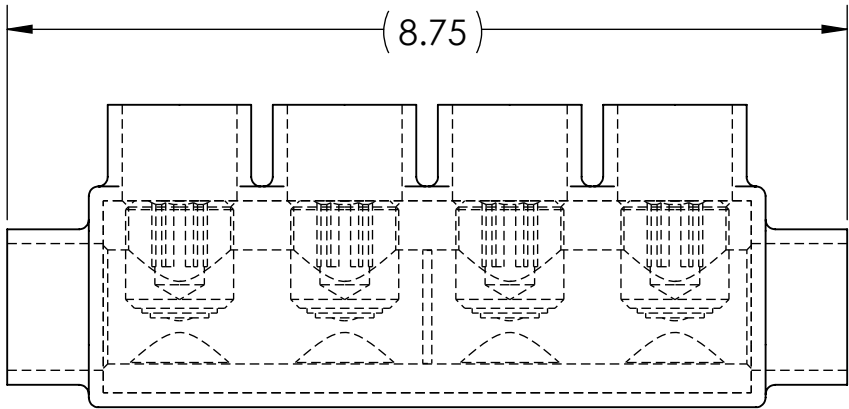
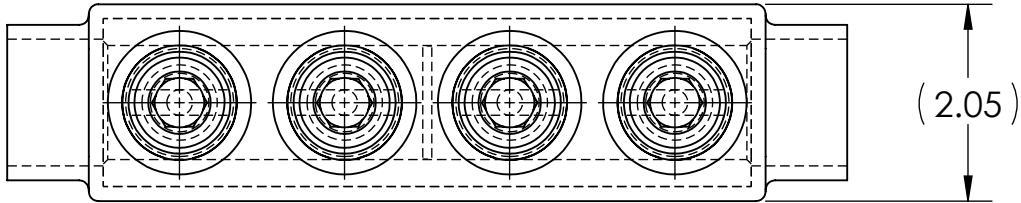



CONDUCTOR SIZE AND STRANDING					
CLASS B & C	CLASS G	CLASS H	CLASS I	CLASS K	DIESEL LOCOMOTIVE CABLE (DLO)
1000 MCM - 500 MCM	600 MCM (427/.0375) - 500 MCM (259/.0439)	600 MCM (703/.0292) - 500 MCM (427/.0342)	600 MCM (1470/.0201) - 500 MCM (1225/.0201)	600 MCM (5985/.0100) - 500 MCM (5054/.0100)	646 MCM (1600/.0201) - 535 MCM (1325/.0201)



- NOTES:
- ALL DIMENSIONS IN INCHES UNLESS OTHERWISE SPECIFIED
 - SUITABLE FOR USE IN CABLE TRAYS, RACEWAYS, DUCTS, AND TROUGHS
 - INSULATION TEMPERATURE RATING: 135°C TO -40°C
 - PRE-FILLED WITH OXIDE INHIBITOR
 - SUPPLIED WITH REMOVABLE ACCESS PLUGS
 - PRE-INSULATED WITH CLEAR HIGH DIELECTRIC STRENGTH PLASTISOL
 - HEX SIZE: 1/2
 - INSTALLATION TORQUE: 800 IN•LB, SET SCREWS TO BE TORQUED FROM OUTER ENDS OF CONNECTOR TOWARDS CENTER
 - STRIP LENGTH: 4-11/16
 - SUITABLE FOR USE ON THE LINE SIDE OF SERVICE EQUIPMENT, "SVC"
 -  LISTED TO 486A-486B FOR ALUMINUM AND COPPER CONDUCTORS AT 600 V, 90°C
 - APPROX. WEIGHT (EXCLUDING ITEMS 2, 3, AND 4): 2.112 LB

INK STAMPING:

PENN-UNION
IISR-1000
1000-500 MCM
SVC
AL9CU

			4	5	ALUMINUM SET SCREW
			2	4	PLUGS FOR CONDUCTOR HOLE (NOT SHOWN)
			2	3	PLUGS FOR SCREW HOLE (NOT SHOWN)
			X	2	CUAL-GEL OXIDE INHIBITOR (NOT SHOWN)
			1	1	INSULATED ALUMINUM BODY
QTY.			PT.	NAME OR DESCRIPTION	
					CLEAR INSULATED IN-LINE SPLICER/REDUCER for 1000-500 MCM
					REF. DWG'S: 4305-56575
					H:\4305\56575_C
					<div><div> PennUnionTM 229 WATERFORD STREET EDINBORO, PA 16412 USA</div><div><div>DRAWN BY: QJB</div><div>DATE: 7/1/2025</div><div>CHK'D: MES</div><div>SCALE: 1:2</div><div>INTERPRET PER ASME Y14.5-2009</div><div>FILE: 4305</div><div>SIZE: B</div><div><div></div><div>DWG. NO.</div><div>IISR-1000</div><div>REV. -</div></div></div></div>