

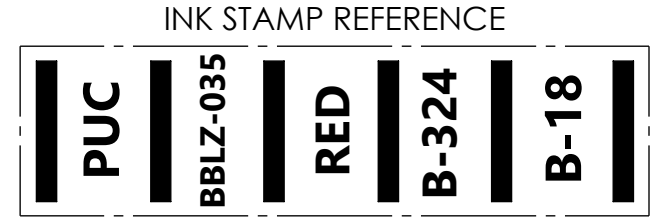
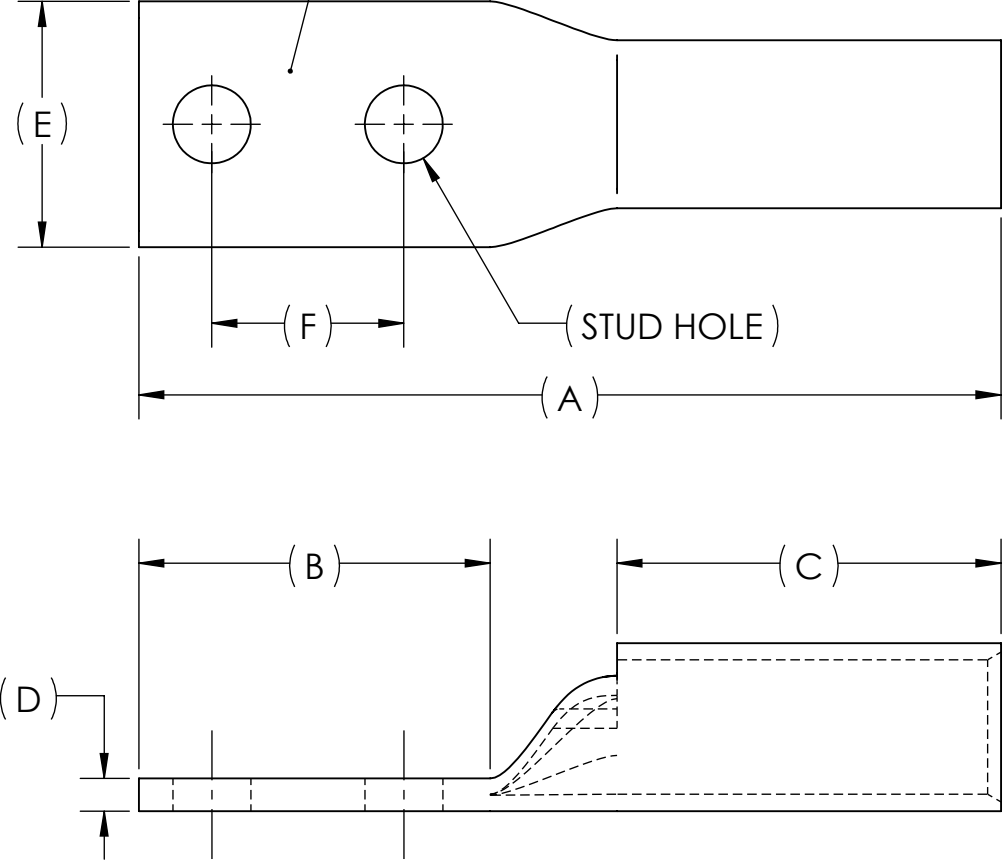
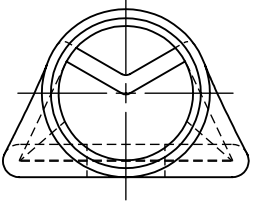
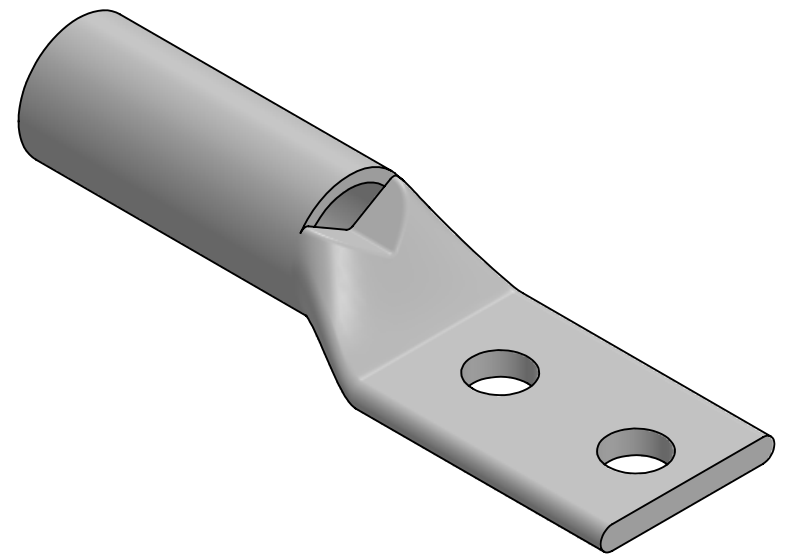


DWG. NO.	BBLZ-035D	REV.	-			DIMENSIONS					APPROX. WEIGHT (LB)	STRIP LENGTH			
				REV.	CAT. NO.	SUFFIX	STUD HOLE	A	B	C	D	E	F		
				01	BBLZ-035D2TC14E2	2TC14E2	1/4	4.02	1.36	2.00	.17	1.28	.75	0.267	2.13
				01	BBLZ-035D2TC38	2TC38	3/8	4.49	1.83	2.00	.17	1.28	1.00	0.292	
				01	BBLZ-035D	-	1/2	5.66	3.00	2.00	.17	1.28	1.75	0.361	

- METAL STAMP TO READ:
1. 350
 2. CU
 3. D
 4. "SUFFIX"
 5. DB
 6. 
 7. 




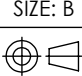
USE BELOW OPTIONAL SUFFIXES FOR ALTERNATE LUG CONFIGURATIONS:
 -45 FOR 45° BENT PAD
 -90 FOR 90° BENT PAD
 -FL FOR FLARED BARREL ENTRY
 -U FOR UNDRILLED PAD
 EXAMPLE: BBLZ-035D2TC14E2-FL



- NOTES:
1. ALL DIMENSIONS IN INCHES UNLESS OTHERWISE SPECIFIED
 2. SEE INSTALLATION SHEET FOR WIRE SIZE AND TOOLING RECOMMENDATIONS
 3. TIN-PLATED TO INHIBIT CORROSION
 4. RATED FOR COPPER CONDUCTORS ONLY
 5. BEVELED ENTRY FOR EASY CABLE INSERTION
 6. INSPECTION WINDOW TO ENSURE FULL CABLE INSERTION
 7. CONNECTORS ARE SUITABLE FOR VOLTAGES UP TO 35 KV
 8. FOR APPLICATIONS GREATER THAN 2000 VOLTS, CONSULT CABLE MANUFACTURER FOR VOLTAGE STRESS RELIEF INSTRUCTIONS
 9. CONNECTORS ARE UL LISTED PER UL486A-B AND CSA CERTIFIED PER C22.2 NO.65 FOR POWER APPLICATIONS UP TO 90°C
 10. CONNECTORS ARE UL LISTED FOR GROUNDING, BONDING, AND DIRECT BURIAL APPLICATIONS PER UL467



NO.	ECN	DATE
REVISIONS		

							X	COPPER TUBING																
					QTY.		PT.	NAME OR DESCRIPTION																
								PENN-CRIMP LUG																
								for																
								350 MCM COPPER CONDUCTORS																
								REF. DWG'S: 2H02-55188, 2H02-55189, 2H02-55190											H:\2H02\BBLZ-035D					
											DRAWN BY: DT			DATE: 6/9/2023			CHK'D: QJB							
								229 WATERFORD STREET			SCALE: 1:1			INTERPRET PER ASME Y14.5-2009						FILE: 2H02				
								EDINBORO, PA 16412 USA			SIZE: B													
														DWG. NO. BBLZ-035D						REV. -				