



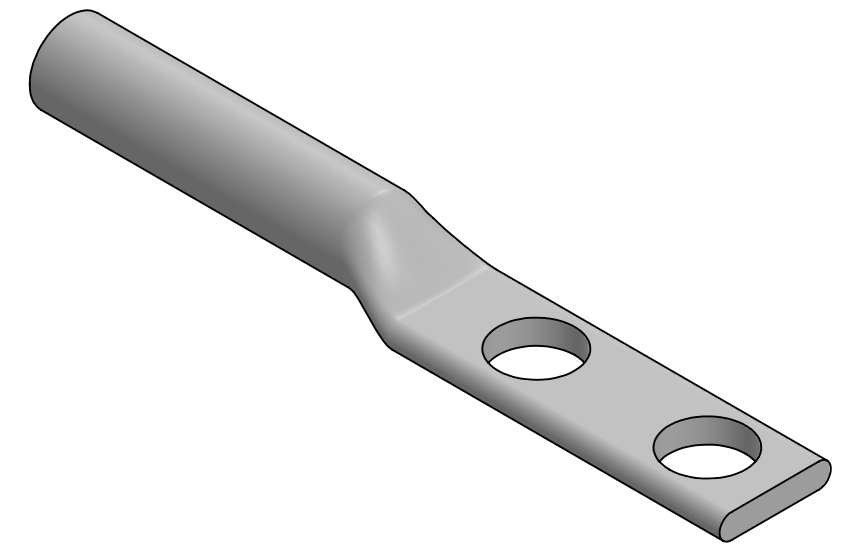
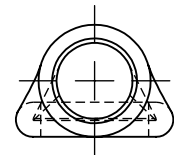
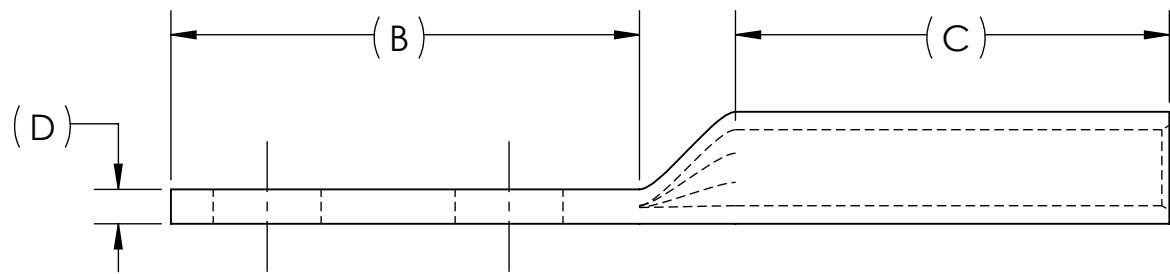
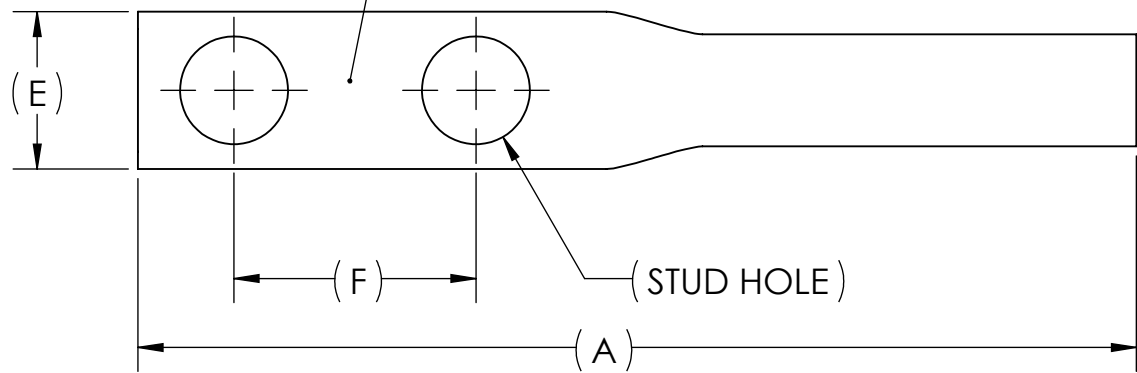
DWG. NO.	BBLU-6D	REV.	-	REV.	CAT. NO.	SUFFIX	STUD HOLE	DIMENSIONS						APPROX. WEIGHT (LB)	STRIP LENGTH
								A	B	C	D	E	F		
		09	BBLU-6D2TC14	2TC14	1/4	2.60	1.22	1.13	.09	.41	.63	0.026	1.19		
		01	BBLU-6D2TC14E2	2TC14E2	1/4	2.74	1.36	1.13	.09	.41	.75	0.028			
		01	BBLU-6D2TC38E3	2TC38E3	3/8	3.21	1.83	1.13	.06	.61	.81	0.032			
		05	BBLU-6D2TC38	2TC38	3/8	3.21	1.83	1.13	.06	.61	1.00	0.032	1.06		
		06	BBLU-6DN	N	1/2	4.35	3.00	1.13	.06	.83	1.75	0.055			

METAL STAMP TO READ:

1. 6
2. CU
3. D
4. "SUFFIX"
5. DB
6. 
7. 

USE BELOW OPTIONAL SUFFIXES FOR ALTERNATE LUG CONFIGURATIONS:
 -45 FOR 45° BENT PAD
 -90 FOR 90° BENT PAD
 -FL FOR FLARED BARREL ENTRY
 -U FOR UNDRILLED PAD
 EXAMPLE: BBLU-6D2TC14E2-FL

INK STAMP REFERENCE




NOTES:

1. ALL DIMENSIONS IN INCHES UNLESS OTHERWISE SPECIFIED
2. SEE INSTALLATION SHEET FOR WIRE SIZE AND TOOLING RECOMMENDATIONS
3. TIN-PLATED TO INHIBIT CORROSION
4. RATED FOR COPPER CONDUCTORS ONLY
5. BEVELED ENTRY FOR EASY CABLE INSERTION
6. CONNECTORS ARE SUITABLE FOR VOLTAGES UP TO 35 KV
7. FOR APPLICATIONS GREATER THAN 2000 VOLTS, CONSULT CABLE MANUFACTURER FOR VOLTAGE STRESS RELIEF INSTRUCTIONS
8. CONNECTORS ARE UL LISTED PER UL486A-B AND CSA CERTIFIED PER C22.2 NO.65 FOR POWER APPLICATIONS UP TO 90°C
9. CONNECTORS ARE UL LISTED FOR GROUNDING, BONDING, AND DIRECT BURIAL APPLICATIONS PER UL467
10. CONNECTORS ARE CSA CERTIFIED FOR GROUNDING, BONDING, AND DIRECT BURIAL APPLICATIONS PER C22.2 NO.41



NO.	ECN	DATE
REVISIONS		

			X	COPPER TUBING	
QTY.	PT.	NAME OR DESCRIPTION			
		PENN-CRIMP LUG for 6 AWG COPPER CONDUCTORS			
REF. DWG'S: 2H08-31539, 2H08-55031, 2H08-54883, 5H08-97767, 5H08-97791 H:\2H08\BBLU-6D					
SEE TABLE CAT. NO.		DRAWN BY: DT		DATE: 2/22/2023	CHK'D: QJB
		SCALE: 2:1		INTERPRET PER ASME Y14.5-2009	FILE: 2H08
SIZE: B		DWG. NO. BBLU-6D		REV. -	
 229 WATERFORD STREET EDINBORO, PA 16412 USA					