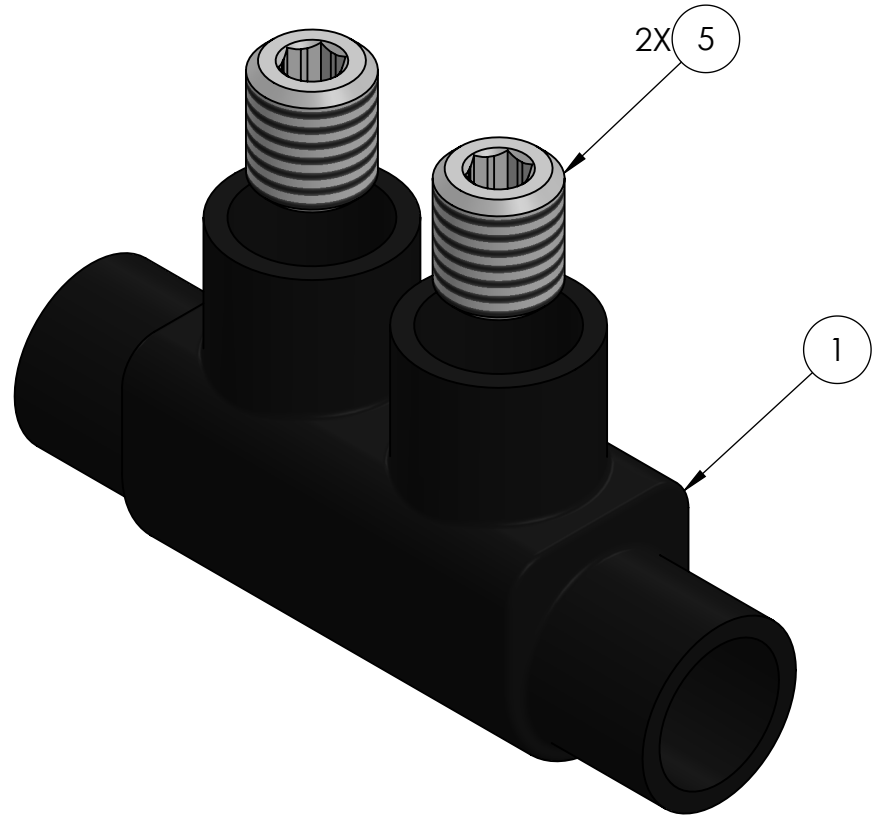
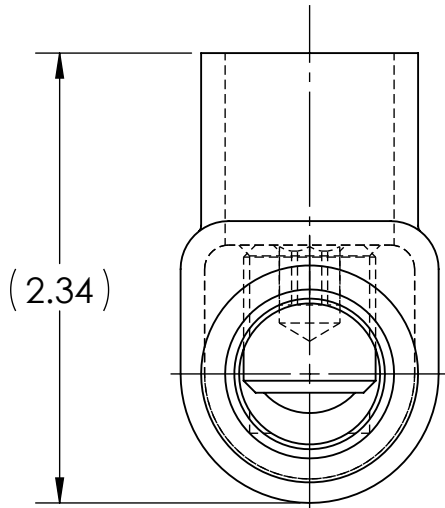
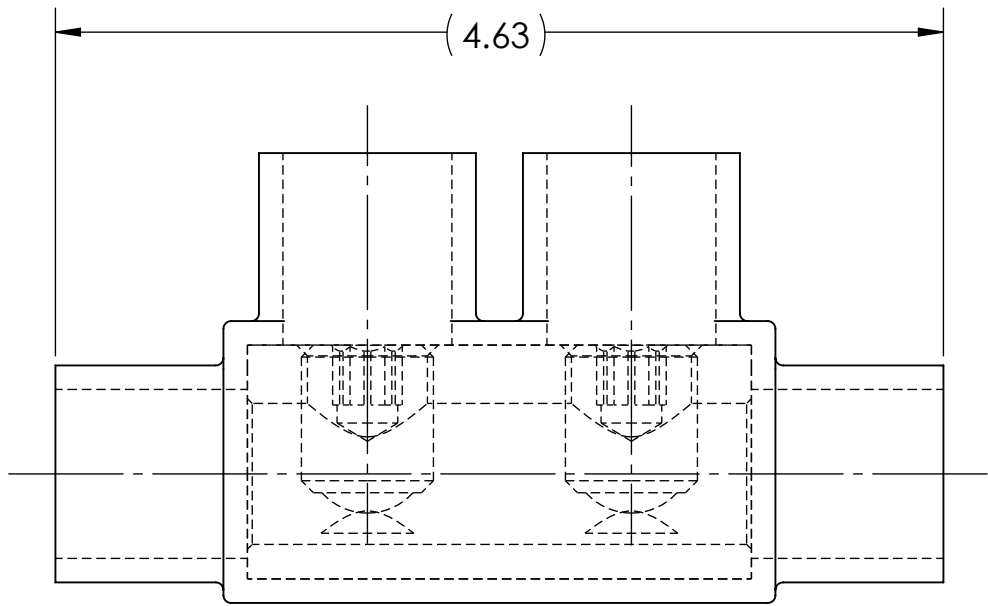
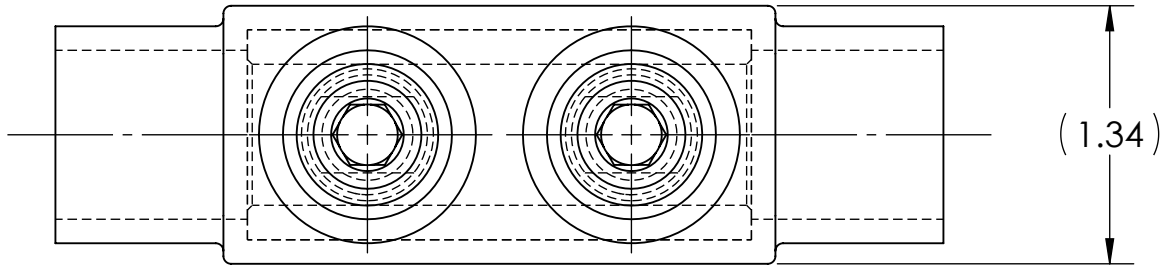



CONDUCTOR SIZE AND STRANDING					
CLASS B & C	CLASS G	CLASS H	CLASS I	CLASS K	DIESEL LOCOMOTIVE CABLE (DLO)
350 MCM - 10 SOL.	250 MCM (259/.0311) - #10 (49/.0146)	250 MCM (427/.0242) - #9 (133/.0099)	250 MCM (637/.0201) - #6 (63/.0201)	250 MCM (2499/.0100) - #9 (133/.0100)	4/0 (550/.0201) - #10 (27/.0201)



- NOTES:
- ALL DIMENSIONS IN INCHES UNLESS OTHERWISE SPECIFIED
 - CONDUCTOR RANGE: 350 MCM - 10 SOL
 - SUITABLE FOR USE IN CABLE TRAYS, RACEWAYS, DUCTS, AND TROUGHS
 - INSULATION TEMPERATURE RATING: 135°C TO -40°C
 - PRE-FILLED WITH OXIDE INHIBITOR
 - SUPPLIED WITH REMOVABLE ACCESS PLUGS
 - PRE-INSULATED WITH BLACK HIGH DIELECTRIC STRENGTH PLASTISOL
 - HEX SIZE: 5/16"
 - INSTALLATION TORQUE: 275 IN•LB
 -  LISTED TO 486A-486B FOR ALUMINUM AND COPPER
 - CONDUCTORS AT 90°C
 - APPROX. WEIGHT (EXCLUDING ITEMS 2 AND 3): 0.356 LB

INK STAMPING:

PENN-UNION
IISRB-350
350 MCM - 10 SOL
 AL9CU

			2	4	ALUMINUM SET SCREW
			4	3	PLUGS FOR SCREW HOLE & CONDUCTOR HOLE (NOT SHOWN)
			X	2	CUAL-GEL OXIDE INHIBITOR (NOT SHOWN)
			1	1	INSULATED ALUMINUM BODY
QTY.			PT.	NAME OR DESCRIPTION	
IISRB-350			CAT. NO.	BLACK INSULATED IN-LINE SPLICER/REDUCER	
				for	
				350 MCM - 10 SOL	
				REF. DWG'S: 4305-98051	
IISRB-350			CAT. NO.	H:\4305\98051_C	
					
				DRAWN BY: QJB DATE: 6/8/2021 CHK'D: CLT	
				SCALE: 1:1 INTERPRET PER ASME Y14.5-2009 FILE: 4305	
IISRB-350			CAT. NO.	SIZE: B	
					
				DWG. NO.	
				IISRB-350	
IISRB-350			CAT. NO.	REV.	
				1	

1	11897	11/14/2019
NO.	ECN	DATE
REVISIONS		